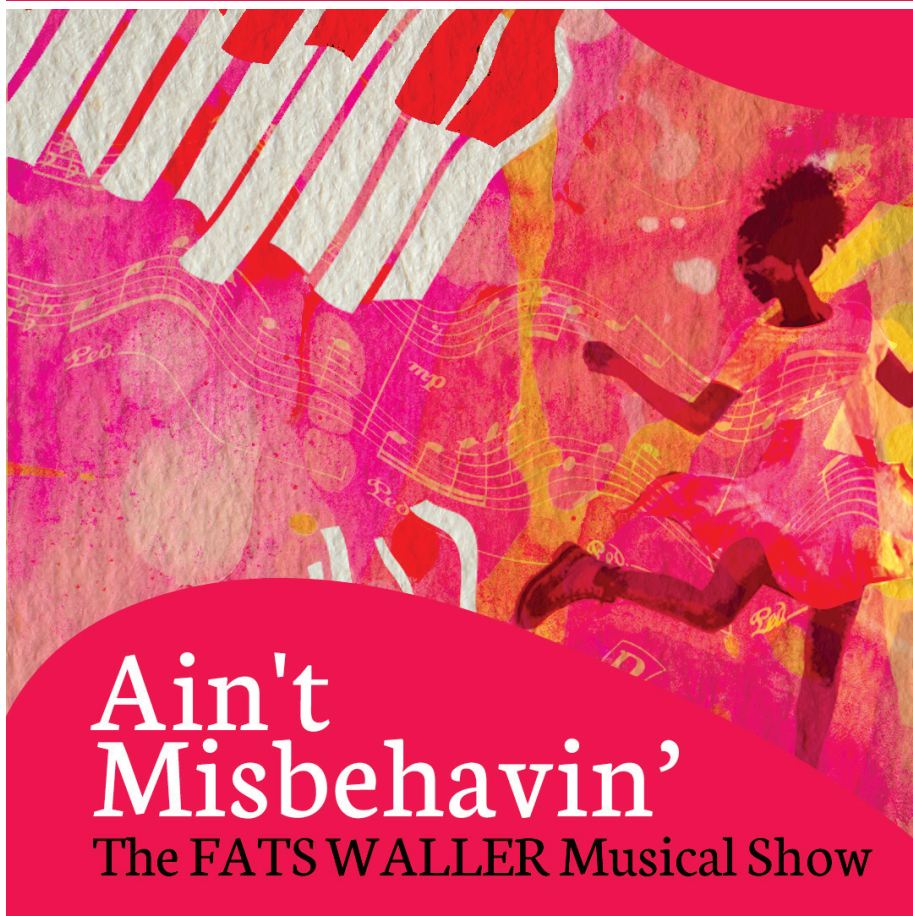




THE CAPE PLAYHOUSE

Where Broadway Goes to Summer

June 7-17 **2023**



Ain't Misbehavin'

The FATS WALLER Musical Show

Dennis Village, Cape Cod MA | 97th Season





Nothing Tops Our Home Made Ice Cream



*...except cherries and sprinkles or
hot fudge or butterscotch or mixed
nuts or whipped cream!*

Homemade Premium Ice Cream

Homemade Waffle Cones • Soft Serve • Frappes
Ice Cream Cakes • Gelato

Also Delicious Panini's & Soups *Hyannis Location Only*



**645 Iyanough Rd /
Route 132
HYANNIS**

508-568-3600

*OPEN YEAR ROUND
In the Hyannis Christmas Tree
Plaza / Trader Joe's*

**716 Main St., Rte 6A
DENNIS**

508-385-2800

"In the heart of Dennis Village"

★ Down the street from the Playhouse ★

**5 Theatre Colony
Rd / Rte 28**

SOUTH YARMOUTH

508-398-8400

*Next door to All Seasons Resort
across from the
Hearth 'n Kettle Plaza*



www.capecodcreamery.com





ABOUT THE CAPE PLAYHOUSE: 1927 - 2023

In 1924 a 25-year-old painter and playwright emerged onto the Cape Cod theatre scene. His name was Raymond Moore. After staging one of his productions in Provincetown and managing a makeshift theatre, he began searching for a site to establish a professional summer playhouse. In Dennis Village, Moore found what he was looking for.

He purchased three-and-a-half acres of land along the Old Kings Highway, moved an abandoned 19th century meeting house to the site, converted it into a theatre, and on July 4, 1927, the curtain rose for the first time on *The Guardsman*, starring Basil Rathbone and Violet Kemble Cooper. On that rainy night, Moore's vision of bringing Broadway-caliber theatre to Cape Cod was realized.

A mere three years later, in 1930, Moore introduced the second phase of his vision for an arts haven at the center of Cape Cod with the Cape Cinema. Designed by architect Alfred Easton Poor and decorated with a 6,400 square foot ceiling mural by painter and illustrator Rockwell Kent - considered at the time "the most beautiful talking picture theater in America." Prior to his untimely death in 1940, Moore also indulged his passion for horticulture and the Playhouse grounds were a destination for garden enthusiasts.

Today, the Cape Playhouse, its associated buildings, and the Cape Cinema are owned by the Cape Cod Center for the Arts (CCCCA). Established as a non-profit organization in 2005, the CCCC remains dedicated to the education and benefit of the public through the promotion and fostering of theatrical and cinematic arts - continuing in Raymond Moore's grand vision.

CONTENTS

Letter from our Guest Artistic Director	2
Title Page	3
Cast and Setting	5
Director's Note	5
Musical Numbers	7
Upcoming Shows at The Cape Playhouse	8
Who's Who in the Cast	9
Become a Member	16
Letter from the Board President	17
Donor Recognition & Partners	19
FUNday Fridays	23
Corporate, Foundation & Government Funders	24
A 'S Wonderful Summer Fling - Annual Gala	26
Who's Who on the Staff	27
General Info & Things to Know	32





FROM OUR GUEST ARTISTIC DIRECTOR



I am thrilled to be joining the Cape Playhouse for the 2023 Summer Season and I can't wait to share our six exciting shows with you!

This year marks my 10th season here - having participated as either an actor or director and now Artistic Director. I can't imagine spending a summer anywhere else. There's nothing like live theatre, especially seeing it in such a historic venue as The Cape Playhouse, or as I like to call it, "the Fenway Park of Summer Stock." It has the distinction of being the oldest professional theater in America and attracting many actors and artists coming straight from Broadway. So again this year, you'll be seeing some of the best in the biz!

For the first show, we present the Tony Award-winning *Ain't Misbehavin'*, for an evening of jazz and swing that celebrates the musical joys of the Harlem Renaissance. Originally conceived by the Tony Award-winning director, Richard Maltby, Jr., *Ain't Misbehavin'* toasts the American jazz pianist Thomas "Fats" Waller and his contributions to the Harlem sound. The original cast featured the Tony Award-winning Nell Carter, André De Shields, Armelia McQueen, Charlene Woodard, and Ken Page (who is a consultant on this production). Our production is directed and choreographed by Lacy Darryl Phillip and promises to bring you a rip-roaring evening. The joint will definitely be jumpin'!

Our next show will be *Sense and Sensibility*, Kate Hamill's farcical and modern adaptation of Jane Austen's classic, featuring Jenn Gambatese who recently starred on Broadway in *Tarzan*, *All Shook Up*, and *Mrs. Doubtfire*. Then we'll "doo-wop" over to the Garden State for the Tony Award winning *Jersey Boys* which features hit songs by Frankie Valli and the Four Seasons. The musical will be directed by Cape favorite, Joyce Chittick (*Grease*, *A Chorus Line*).

Back by popular demand, *An American In Paris* stages in July with an all-star cast of Broadway veterans under the direction of Al Blackstone. Then cross the pond with us into Medieval England for a brand new adaptation of Lerner and Lowe's beloved *Camelot* and conclude the summer in Victorian England on the moors of Devonshire with Sherlock Holmes & Dr. Watson in Ken Ludwig's *Baskerville: A Sherlock Holmes Mystery*.

Theatre is all about family and we are delighted that you're a part of ours! Thank you for supporting the Cape Playhouse.

Hunter Foster / Artistic Director





The Cape Playhouse
At the Cape Cod Center for the Arts

Hunter Foster
Guest Artistic Director

Nora Carey
Executive Director

AIN'T MISBEHAVIN'

The FATS WALLER Musical Show

Conceived by
RICHARD MALTBY, JR. and MURRAY HORWITZ

Created and Originally Directed by
RICHARD MALTBY, JR.

Original Choreography and Musical Staging by
ARTHUR FARIA

Musical Adaptations, Orchestrations & Arrangements by
LUTHER HENDERSON

Vocal & Musical Concepts by
JEFFREY GUTCHEON

Musical Arrangements by
JEFFREY GUTCHEON & WILLIAM ELLIOTT

Originally produced by the Manhattan Theatre Club
Originally produced on Broadway by Emanuel Azenberg,
Dasha Epstein, The Shubert Organization, Jane Gaynor & Ron Dante

Starring

Ashanti J'Aria Ciara Alyse Harris Tarra Conner Jones
Anthony Wayne Juson Williams

Scenic Designer
Ryan Howell

Costume Designer
Nicole V. Moody

Lighting Designer
Kirk Bookman

Sound Designer
Jacob Levitin

Musical Designer
Gary Mitchell, Jr.

Wig Designer
Bobbie Zlotnik

Company Manager
Susan Cody

Assistant Director
Marishka Phillips

Production Manager
Daniel Whiting

Casting by
Murnane Casting
Chad Eric Murnane, CSA

Production Consultant
Ken Page

Directed and Choreographed by
Lacy Darryl Phillips

AIN'T MISBEHAVIN': The Fats Waller Musical
is presented through special arrangement with Music Theatre International (MTI).
All authorized performance materials are also supplied by MTI.
www.mtishows.com





Make a grand entrance.

Fast flights make getting here less
of a production. Easy day trips, too.
Enjoy the ride, and the show.



Cape Air®

capeair.com | 800-CAPE-AIR





CAST

(in order of appearance)

Charlaine..... Ciara Alyse Harris*
Armelia.....Ashanti J'Aria*
Nell.....Tarra Conner Jones*
Andre.....Anthony Wayne*
Ken.....Juson Williams*

SETTING

Harlem. New York City. The 1930s.

*AIN'T MISBEHAVIN' IS PERFORMED WITH
ONE FIFTEEN MINUTE INTERMISSION*



The Cape Playhouse is a professional theatre
employing members of Actors' Equity Association,
the union of Professional Actors and Stage
Managers in the United States.

* Member of Actors' Equity Association.



The Director and Choreographer are members of
the **STAGE DIRECTORS AND CHOREOGRAPHERS
SOCIETY**, a national theatrical labor union.



The Designers at this Theatre
are Represented by
United Scenic Artists • Local USA 829
of the International Alliance of Theatrical Stage Employees

DIRECTOR'S NOTE

Where do I begin? First of all, I am blessed, honored and highly favored for this opportunity to share my vision of *Ain't Misbehavin'* with all of you. This is truly a dream come true and the perfect transition, upon celebrating my 50th Anniversary as a "Performing Artist" in the Entertainment Industry.

Thomas Fats Waller, Duke Ellington, Thelonius Monk and many other Jazz greats were the soundtrack to my life, growing up in a household full of Thespians. When the show made it's initial debut, I was a teenager but it spoke to my Soul because of the messgaes in the music.

Although, *Ain't Misbehavin'* is not a typical musical with a book or story, there is a through-line of stories woven together through vignettes and scenarios which are uplifting, enlightening and thought provoking. My wish is to invite you on this journey with us back in time with a twist. Imagine a cinematic approach or "film on stage" transporting you to an era were all the rules were broken for all the right reasons.

The main thing to remember is that it's all about the music! A special mention to my dear longtime friend and now mentor, Mr. Ken Page, an original cast member, for passing the torch and bestowing upon me the history of this legacy to carry it forward. For this I am truly humbled.

Special thanks to Hunter Foster (Guest Artistic Director) and the Cape Playhouse for your support and this opportunity to grow and stretch! I am grateful to have a tremendously talented cast, crew and production team to bring this vision to fruition. It takes a village to raise a child, and here are the beautiful entertaining results. Enjoy!

Lacy Darryl Phillips
Director/Choreographer, *Ain't Misbehavn'*





KOOPMAN LUMBER HAS COME TO THE CAPE!

243 MAIN ST 6A, DENNIS.



POWER TOOLS | GRILLS | DECKING
KITCHEN & BATH | DRIVETHRU LUMBERYARD
AND MUCH MORE AVAILABLE!

visit us online @ koopmanlumber.com or shopkoopman.com





MUSICAL NUMBERS

ACT ONE

Ain't Misbehavin'	Company
Lookin' Good but Feelin' Bad	Company
'T Ain't Nobody's Biz-ness If I Do	Company
Honeysuckle Rose	Ken and Nell
Squeeze Me	Armelia
Handful of Keys	Company
I've Got A Feeling I'm Falling	Nell and Company
How Ya Baby	Andre and Company
The Jitterbug Waltz	Company
The Ladies Who Sing With The Band	Andre and Ken
Yacht Club Swing	Charlaine
When the Nylons Bloom Again	Armelia
Cash For Your Trash	Nell
Off-Time	Company
The Joint Is Jumpin'	Company

ACT TWO

Spreadin' Rhythm Around	Company
Lounging At the Waldorf	Ken, Nell and Company
The Viper's Drag	Andre and Company
Mean To Me	Nell
Your Feet's Too Big	Ken
That Ain't Right	Andre and Armelia
Keepin' Out of Mischief Now	Charlaine
Find Out What They Like	Armelia and Nell
Fat And Greasy	Andre and Ken
Black And Blue	Company

FINALE

I'm Gonna Sit Right Down And Write Myself A Letter	Ken
Two Sleepy People	Armelia and Ken
I've Got My Fingers Crossed	Armelia, Charlaine and Ken
I Can't Give You Anything But Love	Andre
It's A Sin To Tell A Lie	Company
Honeysuckle Rose (Reprise)	Company
Ain't Misbehavin' (Reprise)	Company

AIN'T MISBEHAVIN' ORCHESTRA

Conductor|Keyboard: Gary Mitchell, Jr.
Drums: David Moore
Bass: Ron Mahdi
Alto Sax|Clarinet: Arthur Bakopolus
Tenor Sax|Clarinet: Jared Holaday
Trumpet: Seelan Manickam
Trombone: Jeff Hoyer

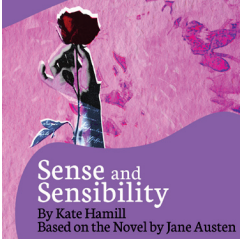




/THE CAPE PLAYHOUSE/

UPCOMING SHOWS

Join us again this season for one or more sensational productions on our historic stage where comedy, musical memories, and a classic who-dunnit preside!



June 21 - July 1

When reputation is everything, how do you follow your heart?

By Kate Hamill.

Based on the novel by Jane Austen.

**Sense and
Sensibility**

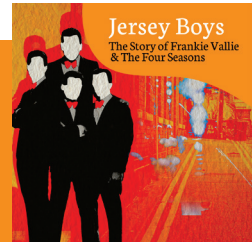
By Kate Hamill
Based on the Novel by Jane Austen

July 5 - 22

The international musical phenomenon that takes you behind the scenes – and behind the music – of Frankie Valli and The Four Seasons.

Book by Marshall Brickman & Rick Elice

Music by Bob Gaudio. Lyrics by Bob Crewe.



Jersey Boys

The Story of Frankie Valli
& The Four Seasons



**An American
in Paris**

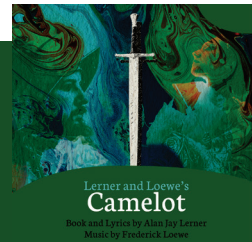
Music and Lyrics by
George Gershwin and Ira Gershwin

July 26 - August 12

A captivating musical full of classic Gershwin tunes that will certainly keep you feeling 'S Wonderful all night long!

Music and Lyrics by George and Ira Gershwin

Book by Craig Lucas



**Lerner and Loewe's
Camelot**

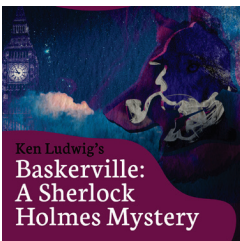
Book and Lyrics by Alan Jay Lerner
Music by Frederick Loewe

August 16 - 26

The legendary love triangle of King Arthur, Guenevere and Sir Lancelot leaps from the pages of T.H. White's novel in Lerner and Loewe's award-winning, soaring musical.

Book and Lyrics by Alan Jay Lerner.

Music by Frederick Loewe. Lyrics by Bob Crewe



**Ken Ludwig's
Baskerville:
A Sherlock
Holmes Mystery**

August 30 - September 9

Ken Ludwig's transforms Arthur Conan Doyle's classic The Hound of the Baskervilles into a murderously funny adventure.

By Ken Ludwig

Based on the novel by Sir Arthur Conan Doyle

FOR TICKETS AND MORE:

capeplayhouse.com / 508.385.3911





WHO'S WHO IN THE CAST



CIARA ALYSE HARRIS (Charlaine) Ciara is THRILLED to be working at the Cape this summer! A Miami Florida native and graduate of Cincinnati College Conservatory of Music (CCM), Ciara's credits include Alana (*Dear Evan Hansen* Broadway), Alana/Zoe Understudy (*Dear Evan Hansen* Tour), Keesha, Black-grounds u/s (*White Girl in Danger*, Off Broadway), Lorraine, (*All Shook Up*, *The Muny*), Mary (JCS, CCM) and Eve (*Children of Eden*, CCM). She thanks her incredible family for always believing in her, HCKR, Rochel Saks & and is forever grateful for trusting in God's timing!



ASHANTI J'ARIA (Armelia) is a Queens NYC Native with a BA in theatre from Fordham University Lincoln Center. She has the title role in the feature film 'Maya and her Lover', (Currently available on the Allblk Network and all streaming platforms). Ms. J'Aria Served as associate producer on the film and wrote/produced/recorded the song "you get to choose" for the soundtrack with Nile Rodger's Music Engineer and right hand man, Russell Graham. She is an accomplished vocalist who has traveled the world lending support vocals to Grammy award winning artists including Gloria Gaynor, Ronnie Spector, UK recording artist Dennis Taylor, Lea Delaria and Herb Reed's Platters. Theatrical credits include The first National Broadway Tour of *The Prom* (Mrs Greene), originating a lead role in Stephen Schwartz Production of the musical, *The Secret Silk* directed by John Tartaglia for Princess Cruises. *Saturday Night Fever* (Broadway), *Disaster* (Off-Broadway), *The Last Smoker In America* (Off-Broadway), regional productions of *Little Shop of Horrors*, *Beehive*, American premiere of *Da Kink In My Hair* (NAACP award winning production) *Guys & Dolls*, *Caroline Or Change*, *Hair* and *Ain't Misbehavin'*. TV credits include FBI's most wanted, Katy Keene (CW) *BULL* (CBS). This American Idol Alum had the distinction of going to Hollywood twice having her footage featured on The Oprah Winfrey Show. Look for her on Season 3 of *Only Murders In the Building*. Special thanks to Across the Board Talent Agency, Bodega7 Management, Hunter Foster, Ken Page, & Lacy Darryl Phillips for this exquisite opportunity.



TARRA CONNER JONES (Nell) - Is a NYC based singer/actor/writer originally from Jacksonville, Fl. She recently made her Off Broadway Debut in *White Girl In Danger* (Drama League Nominee and Drama Desk Nominee) for her role as Nell Gibbs. Past credits include: *The Color Purple*, *Little Shop of Horrors*, *Ma Rainey's Black Bottom*, *Ain't Misbehavin'*, *Shrek*, *Hairspray*, *Chicago The Musical*, *Dreamgirls*, and *From Birmingham To Broadway* (A one act play with music about Nell Carter, written by Tarra). Tarra forever performs in memory of her mother, Chonita Conner, who cheers from heaven. Much appreciation to her agent, Dave Secor (Daniel Hoff Agency).





ANTHONY WAYNE (Andre) is thrilled to spread rhythm around with this amazing company at The Cape Playhouse. Broadway: *Tina-The Tina Turner Musical* (Raymond), *TOOTSIE-The Musical*, *Once on This Island*, *PIPPIN*, *Anything Goes*, *Priscilla* (Jimmy). Off-Broadway: *Mighty Real: A Fabulous Sylvester Musical* (Sylvester), *A Chorus Line* (Richie; NY City Center). Regional: *Guys and Dolls* (Angie The Ox; Kennedy Center DC).

BLACK BROADWAY MEN, INC. (Exec. Dir.; @BlackBroadwayMen). Website: www.MrAWayne.com. Instagram: @MrAWayne. Norfolk, Virginia Native. #EGG. So much love to Ken Page, Lacy Darryl Phillips and Hunter Foster for this incredible opportunity.



JUSON WILLIAMS (Ken) is excited to make his Cape Playhouse debut. He is an American Actor, Singer, Writer, Director, Choreographer, Producer and Executive/Artistic Director of the famed Choir, JW's Inspirational Singers, which appeared on Season 16 of *Americas Got Talent*. He was last seen in the World Premiere Musical *A Wonderful World* starring as Louis Armstrong, at the Colony Theatre in Miami Beach Florida,

in which he played to great acclaim and rave reviews. A Graduate of Boston Conservatory, Juson Williams is a 4 time Audelco Award Winner for his work in *BLACK MAN RISING* and *FLAMBEAUX*. Some New York Credits include *The Color Purple*, *Scottsboro Boys*, *The Music Man*, *The Wiz* starring Ashanti, Lachanze, *Smokey Joe's Cafe*, *Memphis*, *Jesus Christ Superstar*, *Stormy Weather* starring Leslie Uggams, *Fortress of Solitude*, *It Ain't Nothin But The Blues*, *Five Guys Named Moe*, and *Moms Mabley*, starring Clarice Taylor! Juson has worked with some of the biggest and iconic stars in the world including: Gladys Knight, The Pentatonix, Jordan Smith, Kathy Sledge, Sam Smith, Nile Rodgers, Tischina Arnold, Shania Twain, SIA, Sarah McLaughlin, and Mariah Carey. Juson has appeared on *Saturday Night Live*, *Full Frontal* with Samantha Bee, *The John Oliver Show*, *The Tonight Show*, *The Late Show*, NBC's Christmas Tree Lighting in Rockefeller Center, The Grammys at Madison Square Garden, The Macy's Day Parade, The Today Show and performed with the original David Bowie Band, at Terminal 5, for The David Bowie tribute around the world! Juson continues on this journey leading with love and grace, inspiring and being inspired!

THOMAS "FATS" WALLER (May 21, 1904 - December 15, 1943) was an African-American jazz pianist, organist, composer and comedic entertainer. He was born Thomas Wright Waller in New York City. Waller studied classical piano and organ before apprenticing himself to legendary Harlem stride pianist James P. Johnson. Johnson introduced Waller to the world of rent parties (a party with a piano player, designed to help pay the rent by charging the guests), and soon he developed a performing career. He was an excellent pianist--now usually considered one of the very best who ever played in the stride style--but his songwriting and his lovable, roguish stage personality ("One never knows, do one?") overshadowed his playing.





Before his solo career, he played with many performers, from Erskine Tate to Bessie Smith, but his greatest success came with his own five- or six-piece combo, FATS WALLER AND HIS RHYTHM. Among his songs are "Squeeze Me" 1919, "Ain't Misbehavin'" 1929, "Blue Turning Grey Over You" 1930, "Honeysuckle Rose" 1929, "I've Got a Feeling I'm Falling" 1929, and "Jitterbug Waltz" 1942. He collaborated with the Tin Pan Alley lyricist Andy Razaf and had a commercially successful career, which according to some music critics eclipsed his great musical talent. His nickname came about because he weighed nearly 300 pounds (136 kg). His weight and drinking are believed to have contributed to his death. Waller also made a successful tour of the British Isles in the late 1930's, and appeared in one of the earliest BBC Television broadcasts. He also appeared in several feature films and short subject films, most notably STORMY WEATHER in 1943. With Razaf he wrote "What Did I Do (To Be So Black and Blue)?" 1929 which became a hit for Louis Armstrong. This song, a searing treatment of racism, black and white, calls into question the accusations of "shallow entertainment" leveled at both Armstrong and Waller. On December 15, 1943, at age 39, Waller died aboard an eastbound train in the vicinity of Kansas City, Missouri, following a west coast engagement.

RICHARD MALTBY, JR. (Original Director) BROADWAY: Conceived and directed two Tony Award winning musicals: *AIN'T MISBEHAVIN'* (1978: Tony, N.Y. Drama Critics, Outer Critics, Drama Desk Awards -- also Tony Award for Best Director); *FOSSE* (1999: Tony, Outer Critics, Drama Desk Awards); as well as *RING OF FIRE*, (2006). With composer David Shire: director/lyricist: *BABY* (1983, seven Tony nominations); lyricist: *BIG* (1996, Tony nomination: Best Score; also Dominion Theatre London 2019). With Alain Boublil and Claude-Michel Schonberg, co-lyricist: *MISS SAIGON* (Evening Standard Award, London 1990; Tony nomination: Best Score, 1991); co-lyricist: *THE PIRATE QUEEN* (2007). Director: *THE STORY OF MY LIFE* (2009). Director/co-lyricist: Andrew Lloyd Webber's *SONG & DANCE* (1986 Tony Award for star, Bernadette Peters.) OFF-BROADWAY: with David Shire: director/lyricist *STARTING HERE, STARTING NOW* (1977, Grammy nomination) and *CLOSER THAN EVER*, (1989, two Outer Critics Circle Awards: Best Musical, Best Score; also Off-Broadway Alliance Award, Best Musical Revival 2013; and London Jermyn Street Theatre 2014,). Director: *JUST JIM DALE*, (Roundabout Theatre 2014, Vaudeville Theatre, London 2015). REGIONAL: Lyricist/conceiver, *TAKE FLIGHT* (Menier Chocolate Factory, London 2010; McCarter Theatre 2012); book and lyrics, *WATERFALL* (2015, Pasadena Playhouse and Seattle's Fifth Avenue Theatre); Lyricist, new musical *SOUSATZKA* (2017, Toronto). FILM: Screenplay, *MISS POTTER*, (2007: Christopher Award, best screenplay.). Contributes cryptic crossword puzzles to Harpers Magazine. Son of well-known orchestra leader; Five children: Nicholas, David, Jordan, Emily and Charlotte.



LACY DARRYL PHILLIPS (Director/Choreographer) Lacy Darryl Phillips (Director/Choreographer) aka The Uncle Earl is an accomplished Triple Threat Performer, Multi-Award Winning Recording Artist/Songwriter/Producer, Creative Director, Choreographer, Teacher, Host & DJ. Most recently: Director/Choreographer *Iconic* starring Stephanie Pope (Norwegian Jewel); Choreographer *Ain't Misbehavin'* for California Center for The Arts; Assistant Director *Forever Plaid* for Theatre Raleigh Arts Center; Creative Director/Choreographer *Cherry House ~ The Play* for Broadway Bound Theater Festival on Theater Row NYC; Choreographer/Featured Performer For All My Girls, Carnegie Hall's 100 Years Of Black Men On Broadway. Starred as "Andre" ICT/Long Beach *Ain't Misbehavin'*, and performed in his first show *Miss Moffat* with Bette Davis, at the age of 9. Lacy toured and appeared on Broadway in *Raisin* starring as Travis Younger, *Sophisticated Ladies* starring Gregory Hines, Bob Fosse's *Dancin'*, *Anything Goes* starring Patti Lupone, *Sweet Charity* starring Debbie Allen, *Me And Mrs. Jones* starring Lou Rawls & Darlene Love, *Play On*, Fosse and Broadway: *The American Musical* for PBS. Mr. Phillips Choreographed and Staged the Nat'l Tour of *The Wiz* starring Grace Jones and Peabo Bryson, was Associate Director/Choreographer for the Mariah Carey *Around The World* Tour and Assistant Director/Choreographer for *Signed, Sealed, Delivered* (A Celebration Of Stevie Wonder) at the Venetian Hotel in Las Vegas starring Chaka Khan, Peabo Bryson and Melissa Manchester. Under Mentor Debbie Allen, Lacy assisted and also performed on such television projects as: "A Different World", "The Academy Awards", "Sammy Davis Jr. 60th Anniversary Tribute", "Polly I & II" for Disney and the CBS T.V. Movie "Stompin' At The Savoy"-featured as Teddy The M.C. and "Cool Women." Lacy participated in the inception of The Hinton Battle Theatre Laboratory in New York. He is currently Creative Director for The New Asian Girl Group "Colour Girls" and Director/Choreographer/Co-Producer of the upcoming *New School ~ The Musical*. Creator/Producer of 'Ultimate Underground', a global music, arts and education project and Host/DJ of his weekly award winning radio program 'The Underground Experience with The Uncle Earl', now in it's 13th successful season. www.UltimateUnderground.com

MARISHKA S. PHILLIPS (Asst. Director/Dramaturg) is a Native New Yorker who began performing at the age of 8. Her career includes Broadway, National Tours, European Tours, Television and Film. She has directed numerous stage productions, which has garnished her 3 Audelco Award nominations. She has so far directed 8 films, to which she has won Best Director for three of them. This marks her 17th year as an Celebrity Acting Coach. Which she considers a huge blessing. Her work with actors is currently on display at The Brooklyn Museum. she is extremely honored to work alongside her Brother, Lacy and this amazing cast. You can learn more about her work at www.marishkasphillips.com





KEN PAGE (Production Consultant) has directed five productions of *AIN'T MISBEHAVIN'*. This marks his first time as a consultant on the show. Ken starred in the Off-Broadway and Original Broadway Casts of *AIN'T MISBEHAVIN'*. He also performed the show in L.A. and Paris as well as in the Emmy Award winning NBC television special. He is a Drama Desk Award recipient for his performance as "Ken" in the production. Mr. Page is also known to Broadway audiences for his performances in *GUYS AND DOLLS* (Theatre World Award) *THE WIZ* and *CATS* (OBC and filmed stage version) London: *CHILDREN OF EDEN*, *MY ONE AND ONLY* etc. His stage, film, television credits are numerous. He is widely known as the voice of "Oogie Boogie" in Tim Burton/Disney's *THE NIGHTMARE BEFORE CHRISTMAS*.

GARY MITCHELL, JR. (Music Director) Gary Mitchell, Jr. regularly collaborates with renowned singers, instrumentalists, artists, and ensembles, throughout the world. Gary debuted as Noah "Horse" T. Simmons in *The Full Monty* at The Clink Theatre, Port Douglas, Queensland, Australia; portrayed Jasbo Brown in *Porgy and Bess* at The Royal Danish Opera House-Copenhagen; and has been featured in myriad performances in Japan, Spain, Italy, Germany, and Switzerland. Mitchell has been featured at Houston Grand Opera, Columbia University, Carnegie Hall, Lincoln Center, The Harlem Opera Festival, Teatro alla Scala, Dance Theater of Harlem, 54 Below, NAACP ACT-SO, Harlem Stage Theatre (*Antigone in Ferguson*), as Jimmy Powers in *Lady Day at Emerson's Bar and Grill*, at Portland Stage Theatre, The Cape Playhouse, and he frequents Barrington Stage Theatre. He has also collaborated and performed with PBS, MTV, VH1, Steinway International, and Netflix, and he was associate music director for the reading of Tituss Burgess's *The Preacher's Wife*. Gary is a member of Alpha Phi Alpha Fraternity, Inc., Phi Mu Alpha Sinfonia Fraternity of America, Inc., PHA Aurora Lodge, a Life Member of The Jackson State University National Alumni Association, The National Association of Negro Musicians (NANM), The American Guild of Musical Artists (AGMA), and Actor's Equity Association (AEA).

RYAN HOWELL (Scenic Designer) Off Broadway: *Pretty Hunger*, *Teenage Dick* (The Public Theatre), *Adoration of the Old Woman* (INTAR), *Atalanta* (The Juilliard School). Regional: *Grease*, *Altar Boyz* (The Cape Playhouse); *A Few Good Men*, *School Girls: or The African Mean Girls Play* (Pittsburgh Public Theater), *Lights Out: Nat King Cole* (The Geffen Playhouse), *The Magic Flute* (Opera Theatre St. Louis), *Ariodante* (Curtis Opera Institute), *Ariadne Aux Naxos* (Cincinnati Opera), *Thérèse* (Sarasota Opera), *Idomeneo* (WolfTrap Opera), *Loving vs. Virginia* (Williamstown), *Evita*, *Newsies*, *The Little Mermaid* (Westport Country Playhouse), *Little Shop of Horrors*, *The Last Five Years* (ACT of CT), *Dreamgirls*, *Smokey Joe's Cafe*, *The Legend of Georgia McBride*, *Rock of Ages* (Playhouse on the Square); Associate Design: *Fire Shut Up in My Bones* (The Metropolitan Opera) *Latin History for Morons*, *Eclipsed* (Broadway); Assistant Design: *Hadestown*, *Paradise Square* (Broadway); Film/TV: (Asst. Art Director): HBO/ *Succession* - Season 3/4, Showtime/ *Three Women* - Season 1. Website: www.ryanmhowell.com / Instagram: @ryanmhowell.





NICOLE V. MOODY (Costume Design) Select design credits: A Syracuse *Christmas Carol*, *Rent*- Redhouse Theatre, *The Other Josh Cohen* - Off Broadway, *Guys and Dolls*, *Our Town*- Aspen Theatre, *Clue* - Cape Playhouse, A Connecticut *Christmas Carol*- Goodspeed Musicals, *42nd Street*, *Clue*, *Guys and Dolls*, *The Buddy Holly Story*, *Steel Magnolias*, *Rocky Horror Picture Show*, *Summer of '42*, *Mame*, *It's a Wonderful Life*; a Radio Play, *A Grand Night for Singing*, *Barefoot in the Park* - BCP, *Arsenic and Old Lace*, *The 39 Steps*, Avenue Q- CFRT, *Cracked* (World Premiere)- American Theatre Dance Workshop, *Love, Loss and What I Wore*- NYC, Chicago Tour, Asolo Rep, Films: *Dead Light Glory* (Short Indie), *Hungry for Gold*- IOC.

KIRK BOOKMAN (Lighting Designer) has designed the lighting for countless New York City and regional productions over the past four decades. His favorite lighting design credits include: Lincoln Center's 2011 production of *Company* directed by Lonny Price and starring Neil Patrick Harris, Stephen Colbert and Patti LuPone. For the incomparable Charles Busch: *Shanghai Moon*, *The Divine Sister*, *The Tribute Artist*, *Die Mommy Die*, *The Green Heart* and the 2020 hit production of *The Confession of Lily Dare* directed by Carl Andress. Broadway credits include *The Gin Game* with Julie Harris and Charles Durning, and *The Sunshine Boys* with Jack Klugman and Tony Randall. Internationally he has designed the lighting for the Hungarian National, English National Ballet and the Santiago Ballet Company, all with Ivan Nagy.

JACOB LEVITIN (Sound Design) Jacob has been living and breathing sound and music for as long as he can remember. Selected credits include *Islander*, *Fiddler on the Roof in Yiddish*, and *Dog Man, the Musical* (Off Broadway), *Buddy Holly Story* (National tour), and multiple Broadway and touring shows as a music technology specialist with Midiomatic LLC and KeyboardTEK. Jake's very excited to be back at Cape Playhouse! Some of his original music and visual work can be found on Instagram @electricdaisy_studio.

BOBBIE ZLOTNIK (Wig Design) Off-Broadway; *Emojiland* (Drama Desk Nom.), *Fairycakes*, *Mornings At Seven*, *The Book of Merman*, *Drop Dead Perfect*, *Disenchanted*, *Forbidden Broadway*, *Bed Bugs!!!*, and many more. National Tours; *On Your Feet*, *Emojiland*, *Cocomelon LIVE*. PCPA; *Pride and Prejudice*, *Hairspray*, *The Two Gentlemen of Verona*, *My Fairytale*, *Caroline or Change*. *The Lex*; *The Little Mermaid*, *Newsies*, *Music Man*. Gulfshore Playhouse: *Barefoot In The Park*, *Steel Magnolias*, *The 39 Steps*. Park Playhouse; *Matilda*, *Ain't Misbehavin'*. Penguin Rep: *The Virtuous Life of Joseph Andrews*, *Souvenir*. Syracuse Stage: *Tender Rain*, *Our Town*. Tuacahn: *Wonderland*. Bucks County Playhouse; *Evita*. PCLO; *Godspell*. Hangar Theatre; *Kinky Boots*. Theatre By The Sea; *Love And Other Fables*. Film/TV; *The Marvelous Mrs. Maisel*, *The Gilded Age*, *A Holiday Spectacular*, *Halston*, *Getting Curious with Jonathan Van Ness*.





ARTHUR ATKINSON (Production Stage Manager) Arthur Atkinson (Production Stage Manager: *Ain't Misbehavin'*, *Jersey Boys*, *Camelot*) is thrilled to return to the Cape Playhouse for a second season! Recent Off-Broadway: *God of Carnage* (Theatre Breaking Through Barriers), *Becomes a Woman* (Mint Theater), *The Year of Magical Thinking* (Keen Company), Liz Swados's *Nightclub Cantata* (Cell Theatre), *Cagney - The Musical*; many shows at the Irish Repertory Theatre, York Theatre, The Directors Company, Fellowship for Performing Arts, et al. Toured internationally in *Fiddler on the Roof* starring Topol, then Harvey Fierstein and Theodore Bikel. A proud member of Actors Equity Association. Love to Lisa!

MURNANE CASTING (Casting Director) is a boutique casting office in New York City, led by founder Chad Eric Murnane. We specialize in casting theatre, film, and television projects nationwide, with a focus on developing new works with emerging creators. Our mission is to curate exceptional ensembles of artists, champion underrepresented and untapped talent, and facilitate a collaborative and relaxed casting experience. At Murnane Casting, our clients enjoy ongoing support from a team invested in the success of their projects. We believe that every project deserves the best, and we are here to make sure you get it. Learn more at www.murnanecasting.com.

MUSIC THEATRE INTERNATIONAL (MTI) is one of the world's leading theatrical licensing agencies, granting theatres from around the world the rights to perform the greatest selection of musicals from Broadway and beyond. Founded in 1952 by composer Frank Loesser and orchestrator Don Walker, MTI is a driving force in advancing musical theatre as a vibrant and engaging art form. MTI works directly with the composers, lyricists and book writers of these musicals to provide official scripts, musical materials and dynamic theatrical resources to over 100,000 professional, community and school theatres in the US and in over 150 countries worldwide. MTI is particularly dedicated to educational theatre, and has created special collections to meet the needs of various types of performers and audiences. MTI's Broadway Junior™ shows are 30- and 60-minute musicals for performance by elementary and middle school-aged performers, while MTI's School Editions are musicals annotated for performance by high school students.

A Client-Centered Law Practice
Specializing in Estate and Incapacity Planning



SABRINA RAMSEY KANE
ATTORNEY AT LAW

Estate Planning • Special Needs Planning
Probate & Trust Administration

411 Main Street, Building 5, Unit A, Yarmouth Port
508-694-9201 • sabrina@attorneykane.com • attorneykane.com





BECOME A MEMBER

Get in on the act and become a Cape Playhouse member! Enjoy the associated perks and show your support for the theatre. Membership benefits for the 2023 Season are valid for a household and are calculated by your total donations made between September 18, 2022 and September 9, 2023.

Contribute today to ensure the legacy of the Cape Playhouse as
"America's Favorite Summer Theatre."

YOUR MEMBERSHIP SUPPORTS:

- The production of Broadway-caliber performances on our historic stage
- The development of our Children's Programs
- The preservation and maintenance of our buildings and campus grounds

DONOR LEVELS & BENEFITS

Friend \$125+	<ul style="list-style-type: none">• Unlimited free ticket exchanges• Recognition in all printed programs
Contributing Supporter \$250+	<ul style="list-style-type: none">• Friend Benefits• 10% discount on shop merchandise
Supporting Circle \$500+	<ul style="list-style-type: none">• Contributing Supporter Benefits• Invitations to Technical Rehearsals
Sustaining Patron \$1,000+	<ul style="list-style-type: none">• Supporting Circle Benefits• Two invitations to one Meet and Greet Cocktail Party
Premier Patron \$2,500+	<ul style="list-style-type: none">• Supporting Circle Benefits• Two invitations to two Meet and Greet Cocktail Parties• Introduce a friend to the Playhouse with two complimentary show tickets
Bronze \$5,000+	<ul style="list-style-type: none">• Supporting Circle Benefits• Two invitations to three Meet and Greet Cocktail Parties• Introduce a friend to the Playhouse with four complimentary show tickets• Give four show tickets to a non-profit or school of your choice
Silver \$10,000+	<ul style="list-style-type: none">• Supporting Circle Benefits• Two invitations to three Meet and Greet Cocktail Parties• Introduce a friend to the Playhouse with six complimentary show tickets• Give six show tickets to a non-profit or school of your choice
Gold \$25,000+	<ul style="list-style-type: none">• Supporting Circle Benefits• Two invitations to three Meet and Greet Cocktail Parties• Introduce a friend to the Playhouse with eight complimentary tickets• Give ten tickets to a non-profit or school of your choice

For gifts of **\$50,000 and above**, the Development Department will contact you to customize your benefits.





Welcome back! Welcome back to the warm nights and twinkling lights that signal our campus is ready for its 97th season of summer theater. We have a spectacular line up of plays and musicals – with timeless characters and enduring stories – that you can enjoy well into September.

While you've been gone, we've been busy. Thanks to grants from the town of Dennis and the state of Massachusetts, we open the doors to a refreshed house that has new shingles and new restrooms (coming!) and for the first time, new insulation. All this marks tangible progress on our long-term goal of offering you programming throughout the year.

It takes tremendous efforts by so many people to deliver on this promise of another season: We rely upon Executive Director Nora Carey to navigate the business, Executive Assistant Brynn Grambow to oversee the Front of House operations and the education program, and we welcome Dianna Costello to lead the Sales & Marketing initiatives. Daniel Whiting returns to lead the production team that makes every set you see on stage glimmer and we enjoy the continued dedication of our Board of Trustees.

This year we are also thrilled to welcome Guest Artistic Director, Hunter Foster. As you may know, Hunter is a Broadway veteran: a uniquely talented actor, accomplished director, and longtime friend of the Cape Playhouse. We are delighted to have him at the artistic helm this season.

In addition to the shows we have many other events planned on our campus this summer. In particular, we hope you will join us for our annual GALA. Celebrating the music of the Gershwins it promises to be a S'wonderful evening of fun on the lawn. **Save the date for August 6th.** You may also want to become a **Playhouse Member** to enjoy "meet and greets" with our performing artists and attend technical rehearsals for our shows. And don't forget the programming for our youngest viewers, FunDAY Fridays, and theater education for those budding thespians.

So, let the magic of our summer theater continue here – in the heart of Dennis Village – for its 97th year. Isn't that S'wonderful and Marvelous!

Remember this is *your* Cape Playhouse. It's here for you, because of you.

Thank you for your continued support.

Bill Templeton
President of the Board of Trustees
Cape Cod Center for the Arts

Trustees of the Cape Cod Center for the Arts, Inc

Bill Templeton, Board President | Linda DeRuvo-Keegan, Vice President
Dennis Corcoran, Treasurer | William Harpin, Secretary
Kathyrn Dunford | Bob Spadaccia | Paul Lambert | Jack Yunits | Robert Burns





Josh

JOSH CELLARS

**"MAKING WELL-BALANCED
WINE TAKES HARD WORK,
BUT MY DAD WOULDN'T HAVE
HAD IT ANY OTHER WAY."**

Josh Cellars
FOUNDER, JOSH CELLARS

and all other marks here from the estate. © 2023 Josh Cellars & Son, Inc. All rights reserved.





DONOR RECOGNITION

The Cape Playhouse is extremely grateful for the extraordinary generosity of all our donors this past year - and for so many of you, throughout the years!

Every gift plays a critical role in bringing professional live theatre to our historic stage and enhancing our educational programs. The individuals and organizations listed on these pages represent the gifts they made between September 18, 2022 and May 15, 2023.

PLATINUM PATRONS

(\$100,000 AND ABOVE)

The Forest Foundation

GOLD PATRONS

(\$25,000 - \$99,999)

Robert and Sue Spadaccia

SILVER PATRONS

(\$10,000 - \$24,999)

James and Esther Cavanaugh

Dick and Beth Currie

Kevin Keegan and Linda DeRuvo Keegan

Kathryn & Michael Dunford

Catharine "Katy" Kreidler

Barry Paster and

Deirdre Taylor Paster

BRONZE PATRONS

(\$5,000 - \$9,999)

Anonymous Fund of

The Cape Cod Foundation

Anonymous

Dennis & Marie Corcoran

Anonymous

Linda Fisher

Arthur and Denise Katsaros

Anonymous

Anonymous

Subak Family Foundation

PREMIER PATRONS

(\$2,500 - \$4,999)

Laura Toy & Louis Deusing

David Elsbee & Lorraine Gilmore

John & Cynthia Fish

Mary Vrontas

Richard and Sandra Boyatzis

Herbert & Dianne Lerner

Judy November

Stephen Hawkins

Charlie Rutz

William & Donna Templeton

Jack & Lees Yunits

SUSTAINING PATRONS

(\$1,000 - \$2,499)

Walter and Janet Baran

Paul & Katherine Baudisch

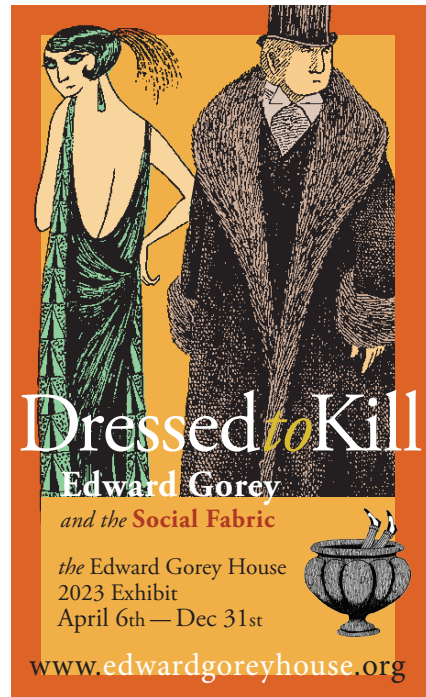
Bertolon Family Foundation

John F Burns

Susan and Ross Coppelman

Margaret and Thomas Crowley

Patricia Cusimano





Lee Drinane
Ronald and Julie Druker
Curt and Jean Feuer
William Flanagan
Marsha Fredericks
Richard A. Govoni
Roy Greenwald
Bill & Sharon Harpin
John & Sheila Hicinbotham
John & Meredith Hudson
Doug and Wendy Kreeger
Herb and Dianne Lerner
Catherine & Mark MacNeil Hollinger
William Marsh
Carole Mathieson & John Iappini
Rosemarie and Phil McLoughlin
Sue & Bill Perry
Catherine Milligan
Margaret Rice
Robinson Family
Nancy Smith
Thomas & Martha Spalding
In honor of John Squarok &
John Kochanowski
Nancy Stavis
Lucy Steere
Schatze and Peter Thorp
William F. Tyler
Melissa Vokey
Phil Ware and Golf Pomsuwan

SUPPORTING CIRCLE

(\$500 - \$999)

Donald C Bates
Suzanne Bergoffen
Marilyn Bruneau
Kathleen Burns
Kate Byron
William and Marlene Caplan
The Catchings Family
Anonymous
Joe and Wanda Corn
Glorianne Demoulas
Rose Aster
Marsha Fredericks
Thomas and Leslie Gardner
Peg McFeeley Golden and Rick Golden
Kimberly Strobis
Dan & Jacquie Hughes
David and Nancy Kaplan

Thomas & Judith McCullough
Teddy & Ellie
Lee Partyka
Teresa and Mark Plotkin
Michael & Elizabeth Reilly
Jane Remy
Margaret Pergola
Frank Seghezzi
Bill & Beth Silverstein
Henry Spadaccia
Peri Wentworth for Zoe, Dylan,
Skylar & Charlie

CONTRIBUTING SUPPORTERS

(\$250 - \$499)

Mary Ann Albertine and
Mark D. Sugermeyer
Edward & Mary Amabile
Carolyn Andersen
Bud and Gina Anderson
Roanne & Joseph Angiello
Harris Baseman
Donald C Bates
Peter and Elizabeth Biging
Tom Blanco
Robert & Suzanne Boas
Anonymous
Captain R.W. Breault Jr.
John and Elaine Brouillard
Donna Buonopane and Bart Main
Jean Burke
Ian Carnathan
Lucy Carty
S. Paula Clark
Dr. Joan & Brian Condon
Thomas & Nancy Connelly
Patricia Creedon
Emily Degnan
John and Becky Diercks
Luke and Jesi Donoho
John & Sandra Ferriter
Elaine Fleming
Anonymous
Mary Fay Forbush
Deborah Gavron-Ravenelle
Linda and Lloyd George
Patricia and James Gonet
Bernard and Victoria Hutchens
Mary Ellen Kilmer
Jody Klessel



THE OLD YARMOUTH INN

Restaurant & Tavern *est. 1696*

**Pre-6 ~ 3 course menu
nightly from 4:00 - 6:00**

**Dinner
Garden Seating
Tavern Seating
Dining Room Seating**

**Offering you the
Best of the Season
and an Award
Winning Wine List!**

223 Route 6A, Yarmouth Port, MA
Reservations Always Accepted | 508.362.9962

www.OldYarmouthInn.com | find us on  @OldYarmouthInn &  @oyi_tavern

Michele and James Kyrimes
Paul Lambert
Janice & David Lawrence
Anonymous
Liturgical Publications
Donald Loveland
Richard Maitland
Timothy and Marilyn McCarthy
James McDowell
Thomas & Susan McNeice
Lynne & Lou Meyer
James and Priscilla Morphy
Steven Pearson
Joan Perera
Winfield & Linda Perry
Elizabeth Gould
Marie Pereto-Hedin
Sheryl Perry
Jean Piette
George Pipia
Mary Puskar
Reno Family
John & Lyn Rice
Robert Rivers

Jon and Elizabeth Roellke
Lisa & John Rogol
Denise Ryan
Anonymous
Stephen and Eleanor Shaer
Lucy & Dwight Shepard
Andrew and Deborah Stidsen
Roger & Kathy Sullivan
In Memory of Peter M. Sykes Esq.
Janet Testa
Dr. William Towne
Meridyth Turnbull
George Watson

FRIENDS (\$125 - \$249)

Oceana Realty Trust
Levi C. & Jeanne Adams
George Albert
Robert and Jane Allen
Anonymous
Joseph Arayas
Robert and Linda Barsch
Anonymous
Eric & Suzanne Branscomb



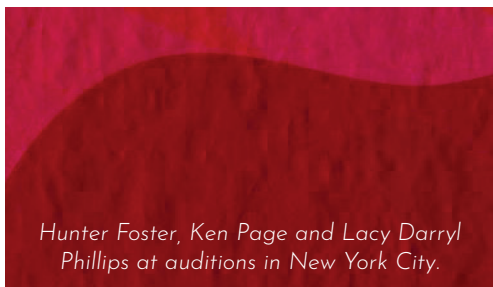


Roland and Marcia Breault
J & J Burrell
Anthony Cerce
Anonymous
Steve Clouter
Joseph and Mary Ann Concra
Catherine Conlon
Rich and Sue Connon
Anonymous
Henry C & Ellen K Dickson
Mady and Bruce Donoff
Peter and Louise Donovan
William and Ellen Dyke
Pam Eaton
Geraldine Fahey
Bob and Sally Fishback
Kent & Allison Frederick
Lindley Gifford
Janet Gladstein
Judith Godin
Michael Goldberg
Patricia and James Gonet
Chris and Bill Greene
Mavis Grorud
Pierre and MaryEllen Guertin
Jonathan Hahn
Barbara Healey
Beverly Hopkins
Peter and Suzanne Hutton
Lynn Kellett
Kathleen & Robert Kemple Jr.
George & Susan Krouse
Paul and Ginny Kula
Richard Lacatell
Patricia Lawrence
Frank Lester
Mary Lewis
Ginnie and Jay Lutze
Donna Jean Martell

Bruce and Nan McCann
Laura McDowell-May
Jane McIntosh
Charles and Stephenie Merrill
Regina Mullen
Helen Murdock
Richard & Jill Oetheimer
Lucille Pascale
Richard & Rose Pears
Anne Peirce
Jerry Ragosa
Mr. & Mrs. David Ready
Joseph & Eileen Reardon
John & Lyn Rice
Elizabeth Roellke
Rosemarie & Jeff Rudin
Ida Schnipper
Susan and Stephen Schwarm
Donald & Mary Lou Schwinn
Richard, Claudia & Anderson Smith
Karen Smith
Sullivan and Sullivan Auctioneers
Samuel Thurston
Dr. William Towne
Karyn and Howie Tripmacher
Meridyth Turnbull
James Warner
Daniel Whiting

We apologize in advance for any error or omission in our Acknowledgement recognitions. Please contact our Box Office staff or email info@capeplayhouse.com with any corrections.

THANK YOU



Hunter Foster, Ken Page and Lacy Darryl Phillips at auditions in New York City.





FUNday FRIDAYS!

INTRODUCE THE YOUTH IN YOUR LIFE
TO THE THRILL OF LIVE STAGE PERFORMANCES!

*Performances every Friday from July 7th to August 25th
From Ages 3+*



We are delighted to be partnering with the Tanglewood Marionettes, Up In Arms, Johnny Peers and The Muttville Comix (the crazy canines that are always a sell-out phenomenon), and the Cape Cod Shakespeare Festival of Chatham who will be presenting summer memory making experiences for a lifetime!

Show Time: 10:30 am

Running time for each show is approximately one hour.

FOR TICKETS AND MORE:

capeplayhouse.com | 508.385.3911

All tickets are \$16.50 | Group Rates are available for parties of 10 or more.

*The Cape Playhouse youth programs are supported
by the Bilezikian Family Foundation*





CORPORATE, FOUNDATION & GOVERNMENT FUNDERS

The Cape Playhouse is grateful to receive support from a wide range of corporations, foundations, and government agencies that support our annual operations and campus renovations.

CORPORATE

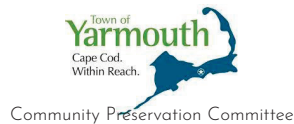


FOUNDATIONS

**The Bilezikian
Family Foundation**



GOVERNMENT FUNDERS



For more information about sponsorship opportunities, please contact
Brynn Grambow at brynn@capeplayhouse.com or 508.385.3838.





MARK CORTALE PRESENTS

THE ART HOUSE

214 COMMERCIAL STREET TICKETS: www.ptownarthouse.com 800.838.3006

BROADWAY @ THE ART HOUSE 2023



W/SETH RUDETSKY
MUSIC DIRECTOR & HOST
ART HOUSE & TOWN HALL



JUNE 30 & JULY 1
MAX VON ESSEN
W/ BILLY STITCH @ PIANO



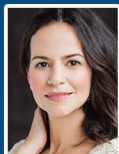
JULY 7
CINDY FIRING
W/JOHN COOK @ PIANO



JULY 14 & 15
CLAYBOURNE ELDER



JULY 21 & 22
NICOLAS KING
& SETH SIKES
W/ BILLY STITCH @ PIANO



JULY 28 & 29
MANDY GONZALEZ



AUG 2 - 5
LIZ CALLAWAY &
ANN HAMPTON CALLAWAY
W/ ALEX RYBECK @ PIANO



AUG. 10 & 11
BETH MALONE



AUG. 23 - SEPT. 2
MARILYN MAYE
W/ TEDD FIRTH @ PIANO



SEPT. 8 & 9
MATT DOYLE

THE TOWN HALL SERIES 2023



MAY 28
JESSIE MUELLER



JULY 2
MONÉT X CHANGE



JULY 9
AUDRA McDONALD



AUG. 6
JEREMY JORDAN
W/ BEN RAUHALA @ PIANO



AUG. 13
ALASKA THUNDERFUCK



AUG. 20
LACHANZE



AUG. 27TH
NINA WEST



AUG. 31
SAMARA JOY
W/ JAZZ TRIO

TOWN HALL SERIES WILL RAISE FUNDS FOR THE SANDY HOOK PROMISE





ONE MINUTE FROM THE PLAYHOUSE!

905 MAIN ST (6A) DENNIS, MA - OPEN WED - SUN AT 5PM



A 'S WONDERFUL SUMMER FLING

Sunday, August 6th
at 6:00 PM

Our annual Summer Gala has become a beloved Fling - a chance to mingle with community friends, meet a few stars, enjoy first-class entertainment, sample amazing food, and participate in a highly animated Live Auction!

So save the date and join us on the Playhouse Lawn for an evening under the stars - with the stars.

Tickets on sale from June 15th
at capeplayhouse.com





WHO'S WHO ON THE STAFF

HUNTER FOSTER (*Guest Artistic Director*) At the Cape Playhouse he has directed *Once, My Fair Lady, Cabaret, Million Dollar Quartet* and *The Foreigner*. He is the co-writer and original director of the stage play *Clue*, which premiered at the Playhouse in 2018. He was named "Director of the Year" by the Wall Street Journal in 2018 for his productions of *The Drowsy Chaperone* at the Goodspeed Opera House; *42nd Street* at the Bucks County Playhouse; and the off-Broadway production of *The Other Josh Cohen*. He has been a long time Artistic Associate at the Bucks County Playhouse where he has directed *Company, Guys & Dolls, The Buddy Holly Story, The Rocky Horror Show* and *Summer of '42*. Other directing credits include: *Our Town, Rock of Ages, Jersey Boys* (Theatre Aspen); *Million Dollar Quartet* (Paper Mill); *God of Carnage, Rent* (Redhouse); *A Connecticut Christmas Carol* (Goodspeed); *Spamalot* (Casa Manana); *Grease* (North Carolina Theatre); and *Into the Woods* (Western Carolina and Nazareth College). As an actor on Broadway: *Little Shop of Horrors* (Tony Nomination), *The Producers, The Bridges of Madison County, Million Dollar Quartet, Urinetown, Hands On A Hardbody, Les Miserables, Grease, Footloose* and *King David*.

NORA CAREY (*Executive Director*) has over 30 years of management experience in non-profit, corporate, and public/private sectors with leadership roles in Business Development, Marketing & Communications, and Project Management. A long-term resident in Europe, yet a MA native, Nora launched her professional career in London - where she developed and implemented a successful Thames-side retail & restaurant strategy for Sir Terence Conran. Moving on to Paris, she was part of the opening team for Disneyland Resort Paris - responsible for the menu development of 27 themed restaurants and subsequently developed and managed a Creative Services department. Following her position with Disneyland Paris, Nora joined the Hotel Ritz in Paris as Marketing & Communications Director before returning stateside as the Director of the annual Epcot International Food & Wine Festival for five years. Other culinary adventures include the establishment of the non-profit Bocuse d'Or USA organization with chefs Daniel Boulud, Thomas Keller, and Jerome Bocuse and she served as the Executive Director of the Boston Public Market Association, collaborating with the Board of Trustees to develop the business plan for the emerging year-round farmer's market in the Haymarket district. Nora has been with the Cape Playhouse since 2019 and feels that she has come full-circle since her childhood summers in Eastham. Nora has an MBA and a professional French Culinary Diploma. She is bilingual in English and French and the author of several cookbooks, including the award-winning *Perfect Preserves* and a successful fundraising volume for the UK Pancreatic Research Fund.





STARLIGHT LODGE CAPE COD

*5-Star Reviews &
Trip Advisor's Award of Excellence*



Quintessential Cape Affordable Luxury

2023 The Cape Playhouse
Hotel Sponsor

- 26 Renovated Suites & Rooms
- Minutes To Dennis Beaches
- Heated Pool, Fire Pit, Picnic/BBQ Areas
- Luxury, Private Guest Quarters With Two En Suite Bedrooms
- Dog Friendly

508-385-3464

203 Main St. (Route 6A) Dennis, MA
StarlightLodgeCapeCod.com





DANIEL WHITING (*Production Manager and Technical Director*) originally based out of Salt Lake City, Utah, Dan is a Technical Director and Production Manager. He worked as the Technical Director for Utah Valley University's Theater Program for four years, and during that time, he won national recognition for his scenic design and technical direction of *Next to Normal* and *Vincent in Brixton* respectively. He has worked with Tuacahn Center for the Performing Arts, The Idaho Ballet, The Neil Simon Festival, The Egyptian Theater, The Sundance Eccles Theater, Radical Hospitality Company, Waterford Theater, ACT of Connecticut, The Covey Theater Center, Sackerson Theater Company, The Grassroots Shakespeare Company, The Cape Playhouse, BYU TV, ABC, AMC, and HBO. He is a founding member and former Artistic Director of the Grassroots Shakespeare Company, Utah's scholarly Shakespeare studies organization and touring theater company. He is a part owner, founder, and former resident Production Manager of Sackerson Theater Company. Touring credits include Production Carpenter for the Tony Award-Winning production of *Jitney*.

SUPPORTING ROLES

Sales & Marketing Director: Dianna Costello

Executive Assistant: Brynn Grambow

Education Director: Johanna Stipetic

*Always Classic.
Never Traditional.*

Ross Coppelman, Goldsmith
coppelman.com 508 385 7900 1439 Rt. 6A East Dennis, MA





COMPANY MANAGEMENT

Company Manager: Susan Cody

Company Management Apprentices: Morgan Eldredge, Brendan O'loughlin

STAGE MANAGEMENT

Production Stage Manager: Arthur Atkinson

PRODUCTION

Production Manager/Technical Director: Daniel Whiting

Assistant Production Manager: Bellamy Hassler

Production Assistants: Natalie Schwikhart, Ellie McIntyre

Lighting Consultant: Jaron Hermanson

Sound Designer & Engineer: Jacob Levitin

Shop Supervisor: Braith P. Dicker

Master Carpenter: Samuel Keran

Shop Assistant: Shannon Carlson

Scenic Charge: Alex Kowalczyk

Scenic Artist: Austin Kuhn

Props Master: Christina J. Garner

Props Carpenter: Caleb Brown

Wardrobe Supervisors: Nicole Crandall, Emily Cummings

Master Electrician: Harrison Marcus

Electricians: Morgan Harrington,
Molly Beall



CAPE CINEMA

Cape Cod's Non-Profit Arthouse Destination

35 Hope Lane Dennis, MA 02638

(508) 385-2503 • CAPECINEMA.ORG

MEDIA PARTNERS



iheartmedia.com
cape cod





PATRON SERVICES

Front of House Managers: Megen Partyka, Nigel Revenge

Front of House Associates: Mia Caccavaro, Emma Engelsen, Emily Drew Hammond, Caroline Kanevski, Kim Moran, Jack Pappas, Elana Sheinkopf

Volunteer Coordinator: Betty Morse

APPRENTICE AND INTERN PROGRAMS

The Playhouse has long been a training ground for emerging artisans by providing professional experience before starting their careers. The following individuals were accepted into our esteemed apprenticeship and internship program from hundreds of applicants:

Artistic Director Apprentice: Madilyn Spear

Carpenter Apprentice: Carly Genovesi

Education Apprentices: Mia Caccavaro, Elana Sheinkopf

Electrician Apprentice: Audrey Robinson

Props Apprentice: Marlowe Conway

Rehearsal Room Apprentice ASM: Sarah Adams

Scenic Artist Apprentice: Natalie Beier

Sound Apprentice: Lee Lillis

Stage Manager Apprentices: Megan Hawk, Marian Vacaliuc

Selling or Buying a Home?
Call Kacy DeFranco

KacySellsCapeCod.com
774-212-2339
KDeFranco@TodayRealEstate.com

TODAY
REAL ESTATE

Zillow®
★★★★★

" Her professionalism, honesty, compassion and work ethic made the process from start to finish such a great experience! I couldn't imagine doing it with anyone else."

Call For An Appointment TODAY

Move With A Cape Cod Specialist

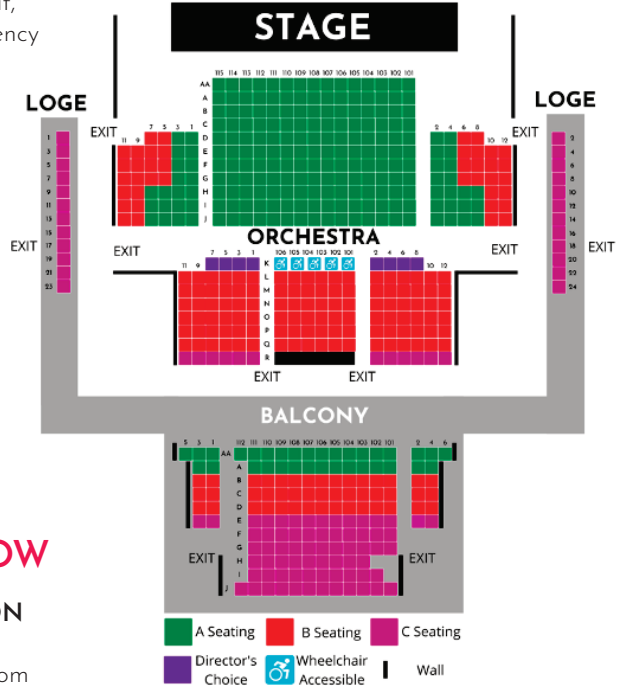




GENERAL INFO

CAPE PLAYHOUSE EMERGENCY EVACUATION MAP

In addition to the Lobby exit, there are additional emergency EXITS as indicated on the house map.



THINGS TO KNOW

CONTACT INFORMATION

- Box Office: 508.385.3911
- Website: CapePlayhouse.com
- Administrative Offices: 508.385.3838

BOX OFFICE HOURS

- Monday-Saturday from 12pm to 5pm
- During performances, the Box Office will remain open through intermission.

CONCESSIONS

When snacks and drinks are available before the performance and during intermission, we kindly request that you refrain from eating and drinking in the theatre.

CAMERAS

The use of cameras and recording devices is prohibited in the theatre.

HEARING EQUIPMENT

Assisted listening devices are available from the house manager.

BABES IN ARMS

Children must have a ticket.
Children under the age of five are not permitted in the theatre.

WHEELCHAIR ACCESSIBILITY

The Playhouse is accessible by ramp and can accommodate both wheelchair and companion seating in the orchestra section. Please notify us when you purchase your tickets if wheelchair accommodations are required.

RESTROOMS

The main women's room is located off the Lobby, additional men and women's in the House left vestibule. Temporary mens' rooms are located on the rear main lawn.





The Village at Thirwood Place

Active Living in a Spacious, Beautiful Surrounding

The Village at Thirwood Place includes 28 exclusive townhome-style residences nestled in the woods next to Flax Pond. Ranging from 1,300 to 1,700 square feet, these make downsizing an easy choice! Residents enjoy golf privileges at Blue Rock Golf Course, flexible dining options, weekly housekeeping, and more.

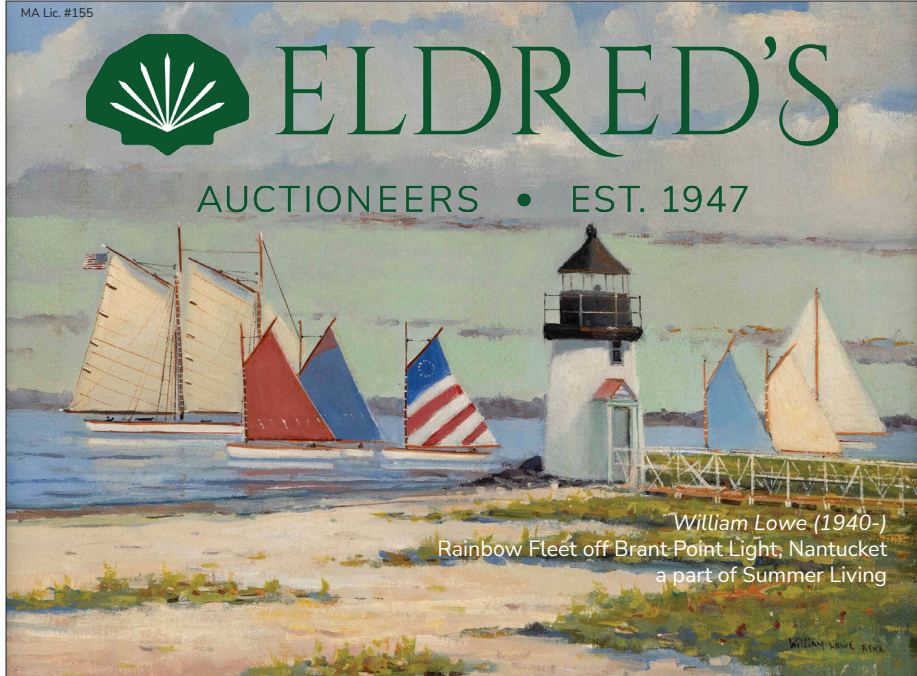
To learn more about the active lifestyle at Thirwood Place, visit us online at ThirwoodPlace.com or stop by and join us for a casual tour.



237 North Main Street
South Yarmouth, MA 02664
(508) 398-8006

ThirwoodPlace.com





2023 SUMMER AUCTION SCHEDULE

- June 13-27** Online-only Asian Art
- June 14** Works on Paper
- June 15-16** Asian Art
- July 6** Summer Living
- July 27-28** The Summer Sale
- August 10-11** The Marine Sale
- August 16** Contemporary Art
- August 17** Jewelry
- Mid-September** Americana + Maritime Art
- Early Fall** 20th Century Art + Design

Open Monday through Friday
from 8:30 to 4:30 p.m.

**Quality auction consignments
always accepted.**

Please call or visit us online to
schedule an appointment.

1483 ROUTE 6A, E. DENNIS | 508-385-3116 | ELDREDS.COM

